

Corridor 134-139

Montrose Sub-SW Corridor

Corridor Rationale

Input regarding alignment from National Grid during the WWEC PEIS suggested following this route. There are no planned transmission or pipeline projects within the corridor and no pending or recently BLM-authorized ROWs for transmission line or pipeline projects within the corridor at this time. Tri-state Electric is upgrading the existing transmission line in this corridor from 115 kV to 230 kV as shown in the Section 368 Energy Corridor Mapping Tool. The upgrade is expected to be completed by late winter 2018/2019.

Corridor location:

Colorado Montrose and Ouray Co.)
BLM: Uncompahgre Field Office
USFS: Uncompahgre National Forest
Regional Review Region(s): Region 2

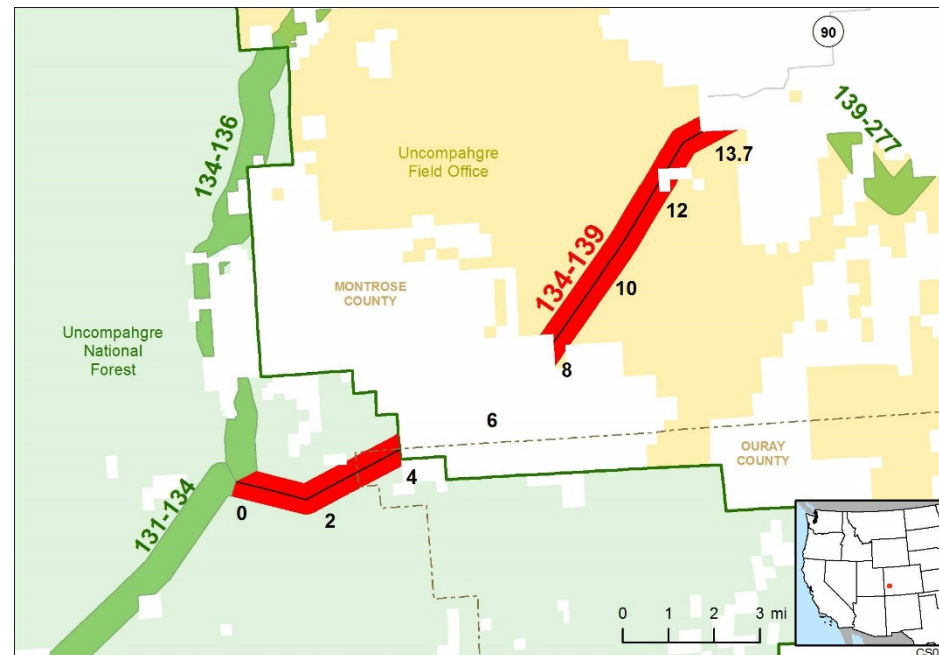
Corridor width, length:

Width 3,500 ft
9.2 miles of designated corridor
13.7 mile-posted route, including gaps

Sec 368 energy corridor restrictions: (Y)

- corridor is electrical transmission only

Corridor of concern (N)



Corridor history:

- Locally designated corridor prior to 2009 (Y)
- Locally designated in Uncompahgre National Forest
- Existing infrastructure (Y)
- Electric transmission:
 - 115 kV being upgraded to 230 kV (MP 0 to MP 14)
- Energy potential near the corridor (N)
- Corridor changes since 2009 (N)

Figure 1. Corridor 134-139

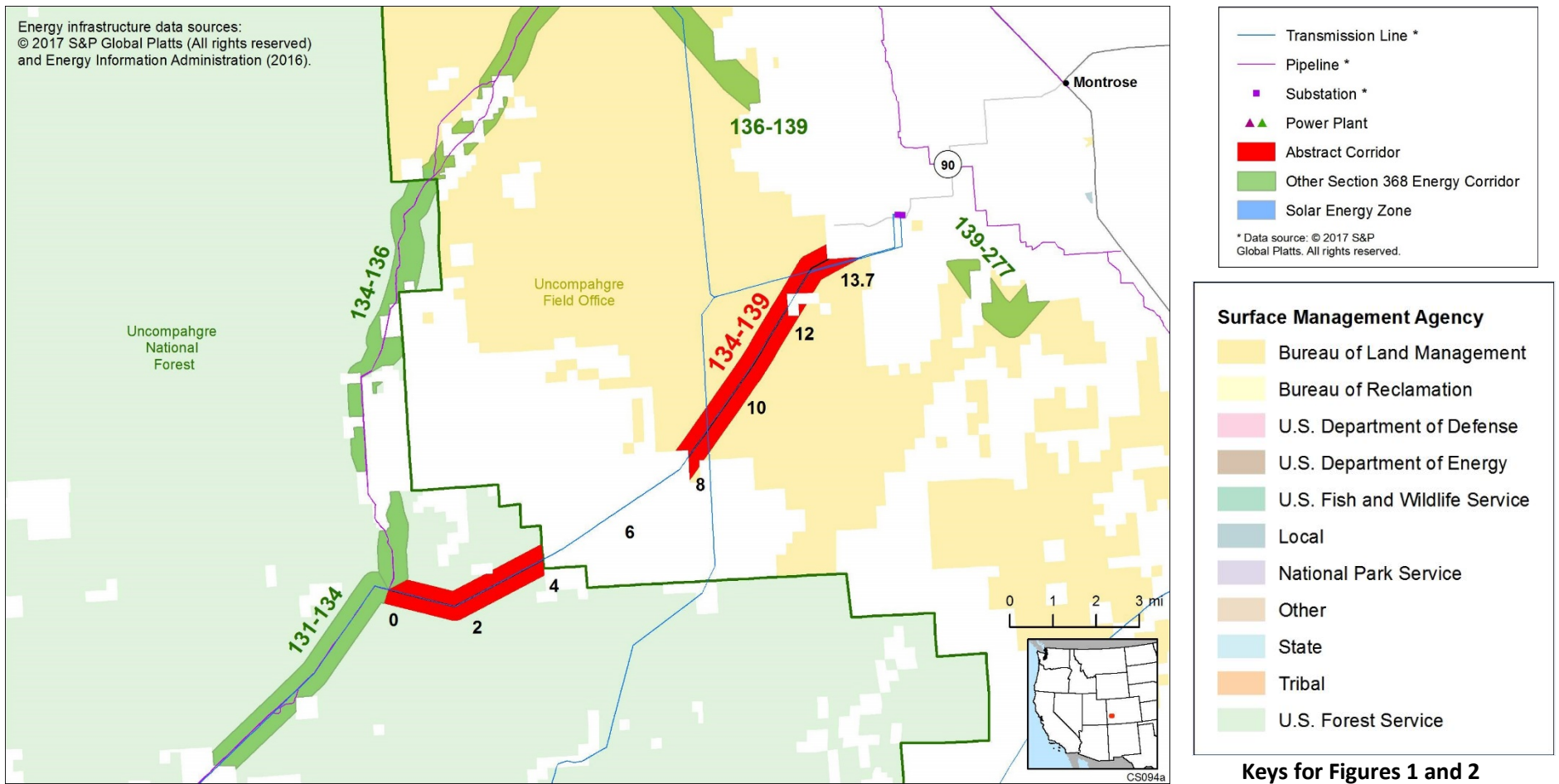


Figure 2. Corridor 134-139 and nearby electric transmission lines and pipelines

Conflict Map Analysis

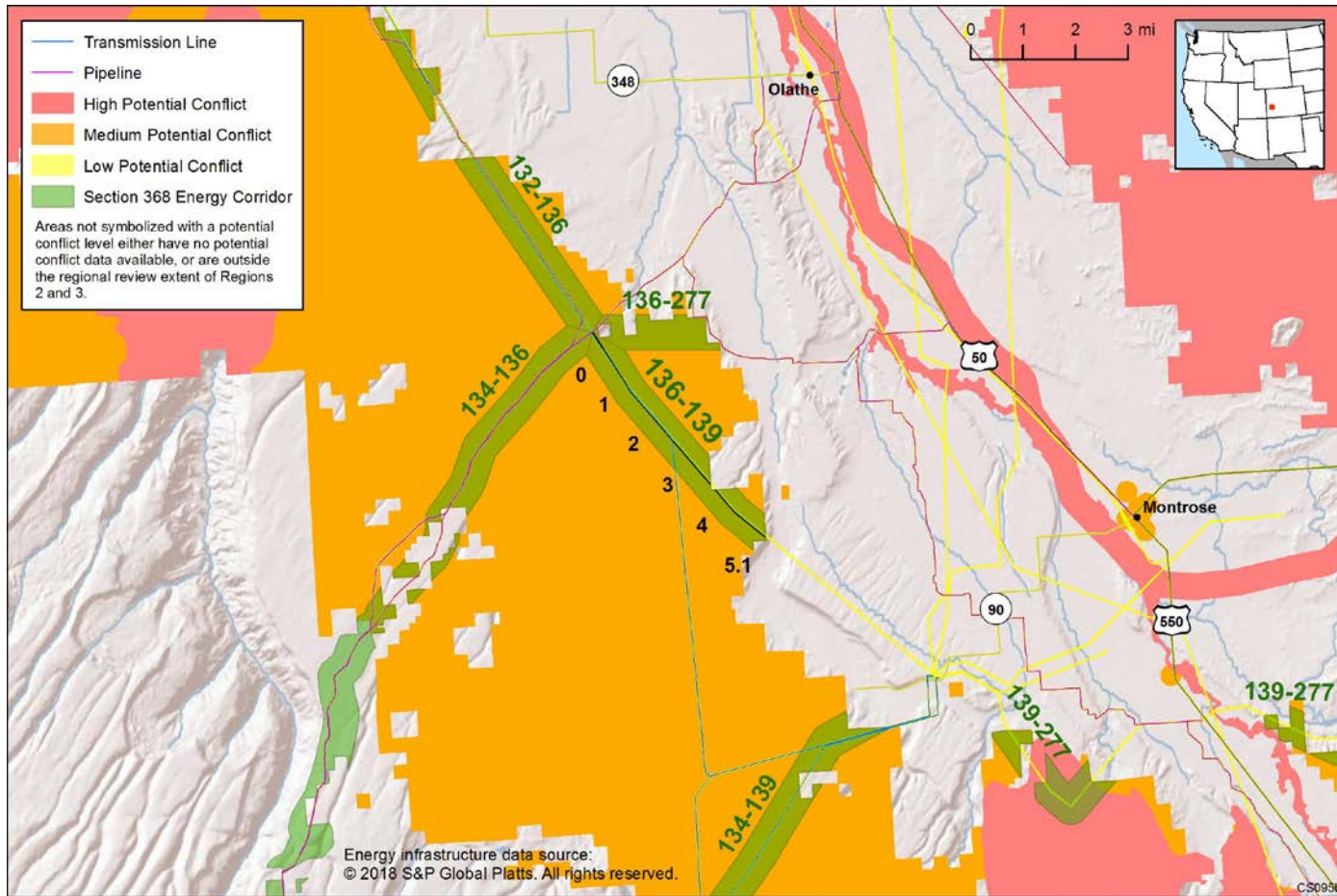


Figure 3. Map of Conflict Areas in Vicinity of Corridor 134-139

Figure 3 reflects a comprehensive resource conflict assessment developed to enable the Agencies and stakeholders to visualize a corridor’s proximity to environmentally sensitive areas and to evaluate options for routes with lower potential conflict. The potential conflict assessment (low, medium, high) shown in the figure is based on [criteria](#) found on the WWEC Information Center at www.corridoreis.anl.gov. To meet the intent of the Energy Policy Act and the Settlement Agreement siting principles, corridors may be located in areas where there is potentially high resource conflict; however, where feasible, opportunity for corridor revisions should be identified in areas with potentially lower conflict.

Visit the 368 Mapper for a full view of the Potential conflict map (<https://bogi.evs.anl.gov/section368/portal/>)

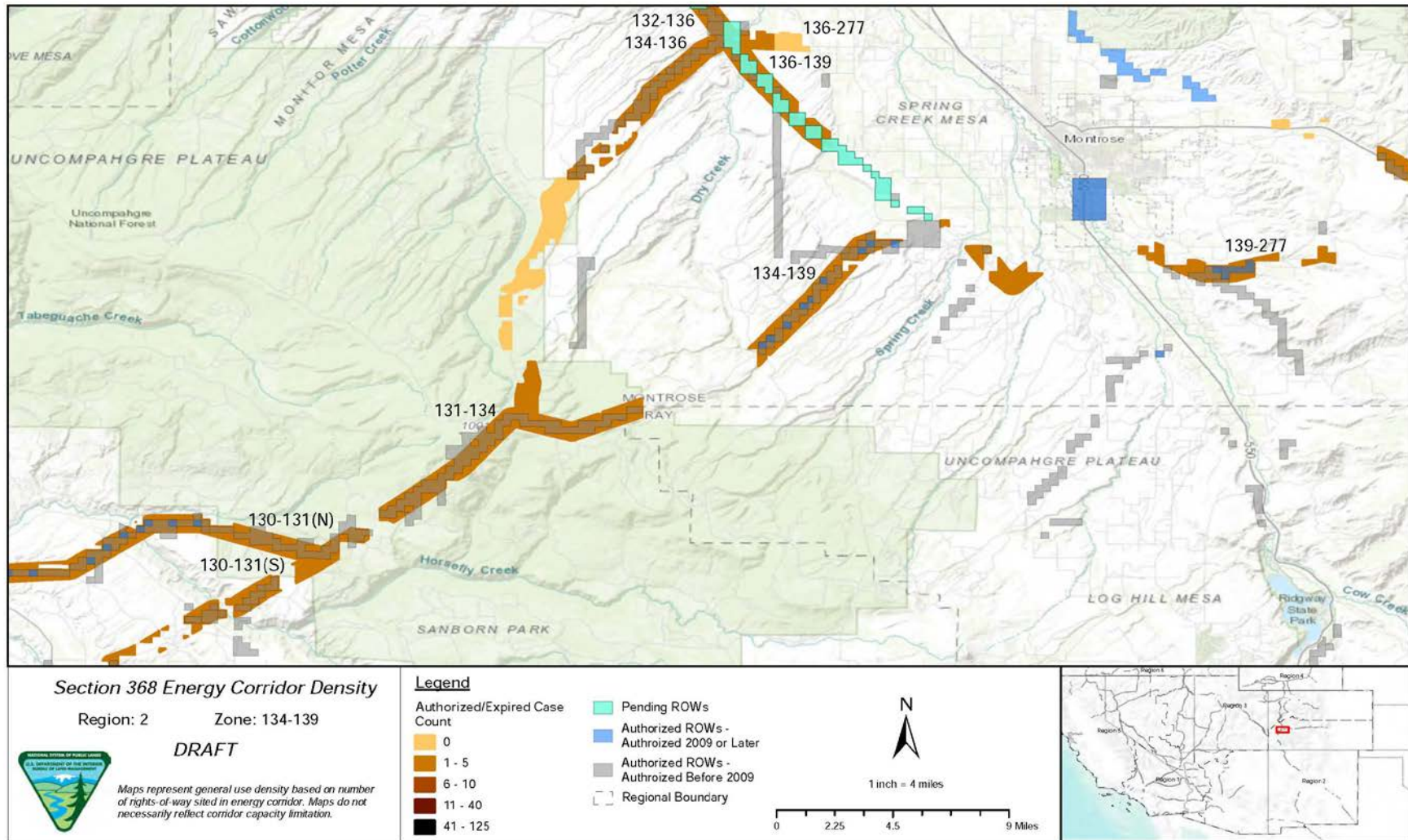


Figure 4. Corridor 134-139, Corridor Density Map

Figure 4 shows the density of energy use to assist in evaluating corridor utility. ROWs granted prior to the corridor designation (2009) are shown in grey; ROWs granted after corridor designation are shown in blue; and pending ROWs under current review for approval are shown in turquoise. Note the ROW density shown for the corridor is only a snapshot that does not fully illustrate remaining corridor capacity. Not all ROWs have GIS data at the time this abstract was developed. BLM and USFS are currently improving their ROW GIS databases and anticipate more complete data in the near future.

General Stakeholder Feedback on Corridor Utility

Stakeholders did not provide specific input on corridor utility.

Corridor Review Table

The table below captures details of the Agencies' review of the energy corridor. Consideration of the general corridor siting principles of the 2012 Settlement Agreement framed each corridor review, to identify potential improvements to maximize corridor utility and minimize impacts on the environment. Initial Agency analysis is provided to facilitate further discussion during stakeholder workshops.

CORRIDOR 134-139 REVIEW TABLE							
ID	Agency	Agency Jurisdiction	County	Primary Issue	Corridor Location (by Milepost [MP])	Source	Agency Review and Analysis ^{1, 2}
ENVIRONMENTAL RESOURCE ISSUES							
<i>Specially Designated Areas</i>							
134-139 .001	USFS	GMUG National Forest	Montrose, CO	Roubideau SMA	MP 0 (near)	GIS Analysis: SMA about 1 mi northwest of corridor.	This corridor best meets the siting principles and does not cross the Roubideau SMA, which was designated to be managed to preserve its wilderness character in 1993. The area designations occurred after designation of the 1D energy corridor management prescription area and after construction of the existing electric transmission line. (1)
<i>Visual Resources</i>							
134-139 .002	BLM	Uncompahgre FO	Montrose, CO	VRM Class III or VRI Class III	MP 8 to MP 14 MP 9 to MP 12	GIS Analysis: VRM Class III areas and corridor intersect. Agency Input: No VRM indicated in the 1989 Uncompahgre Basin RMP, but 2009 survey identified this area as VRI Class III.	VRM Class III allows for moderate change to the characteristic landscape, although minimizing visual contrast remains a requirement. Management activities may attract the attention of the casual observer, but shall not dominate the view. (1)
<i>Cultural Resources</i>							
134-139 .003	USFS	GMUG National Forest	Montrose, CO	Silesca Ranger Station - NRHP	MP 3	GIS Analysis: NRHP property is located within corridor. Comment on abstract: this site is a Civilian Conservation Corps-constructed facility currently in the cabin rental program in the	There is an opportunity to consider a corridor revision to narrow the width of the corridor to avoid this NRHP property. The Silesca Ranger Station is a Civilian Conservation Corps-constructed facility listed on the NRHP and is currently in the cabin rental

CORRIDOR 134-139 REVIEW TABLE							
ID	Agency	Agency Jurisdiction	County	Primary Issue	Corridor Location (by Milepost [MP])	Source	Agency Review and Analysis ^{1,2}
						Uncompahgre National Forest. Urge the Agencies to consider a corridor revision to narrow the width of the corridor to avoid this property.	program. There is a possible conflict with future use of the corridor since the NRHP property is within the corridor. Section 106 process would be followed to identify possible impact of development. (2)

¹ Projects proposed in the corridor would be reviewed during their ROW application review process and would adhere to Federal laws, regulations, and policy.

² (1) = confirm existing corridor best meets siting principles; (2) = identify opportunities to improve corridor placement or IOPs; (3) = acknowledge concern not easily resolved or avoided by corridor-level planning.

Abstract Acronyms and Abbreviations

BLM = Bureau of Land Management; FO = Field Office; GIS = geographic information system; GMUG = Grand Mesa, Uncompahgre, and Gunnison; IOP = Interagency Operating Procedure; MP = milepost; NRHP = National Register of Historic Places; PEIS = Programmatic Environmental Impact Statement; ROW = right-of-way; SMA = Special Management Area; USFS = U.S. Forest Service; VRI = Visual Resource Inventory; VRM = Visual Resource Management; WWEC = West-wide Energy Corridor.