

Corridor 66-259

Willow Creek Corridor

Corridor Rationale

Input regarding alignment from National Grid, PacifiCorp, and the Western Utility Group during the WWEC PEIS suggested following this route. There are no planned transmission or pipeline projects near this corridor. The 600-kV DC TransWest Express transmission line has been approved within the corridor. Currently, the USFS has a pending ROW application for a transmission line that is adjacent to most of the corridor and intersects it between MP 0 to MP 1 and between MP 9 to MP 11. Concerns identified after the 2009 corridor designation were perceived that the corridor was more aligned to serve coal-generated electricity; however, the TransWest Express transmission line is designed to transport renewable energy (wind generated power) from Wyoming to the desert southwest which may alleviate the previous concern.

Corridor location:

Utah (Utah and Wasatch Co.)
 USFS: Uinta-Wasatch-Cache National Forest
 Regional Review Region(s): Region 3

Corridor width, length:

Width 3,500 ft but several pinch points,
 including one <100-ft wide.
 18 miles of designated corridor
 18 mile-posted route, no corridor gaps

Sec 368 energy corridor restrictions: (N)

- corridor is multi-modal

Corridor of concern (Y)

- access to coal plants and impacts on USFS Inventoried Roadless Area.

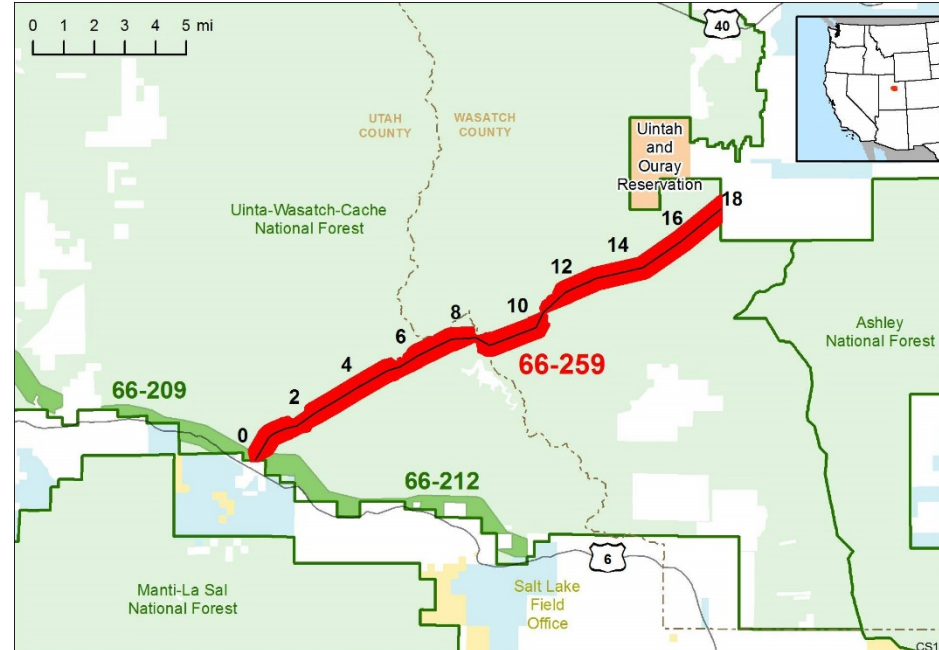


Figure 1. Corridor 66-259

Corridor history:

- Locally designated corridor prior to 2009 (N)
- Existing infrastructure (Y)
 - Electric transmission:
 - 345 kV (just within or adjacent to corridor between MP 0 to MP 18)
- Energy potential near the corridor (N)
- Corridor changes since 2009 (N)

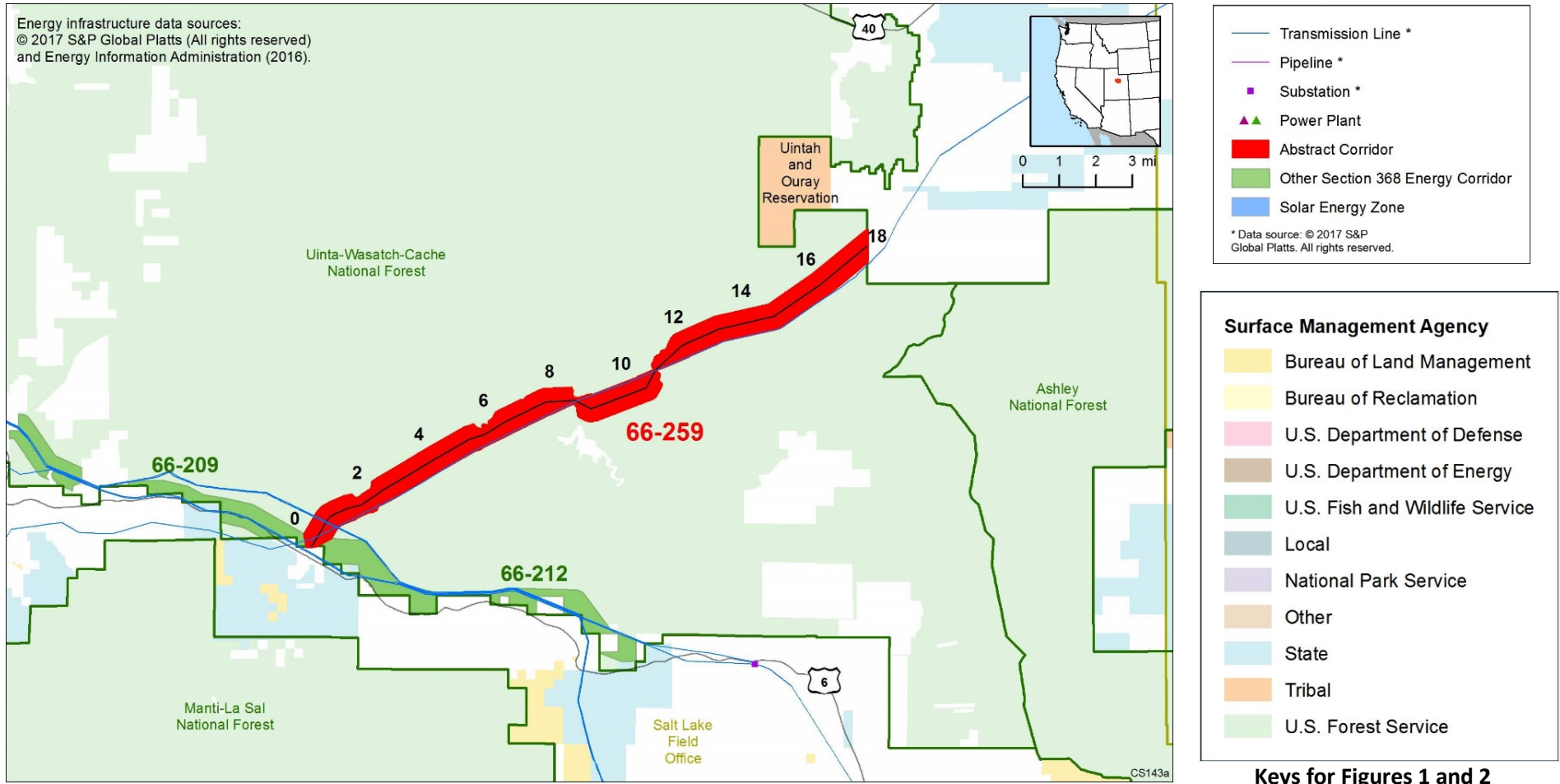


Figure 2. Corridor 66-259 and nearby electric transmission lines and pipelines

Conflict Map Analysis

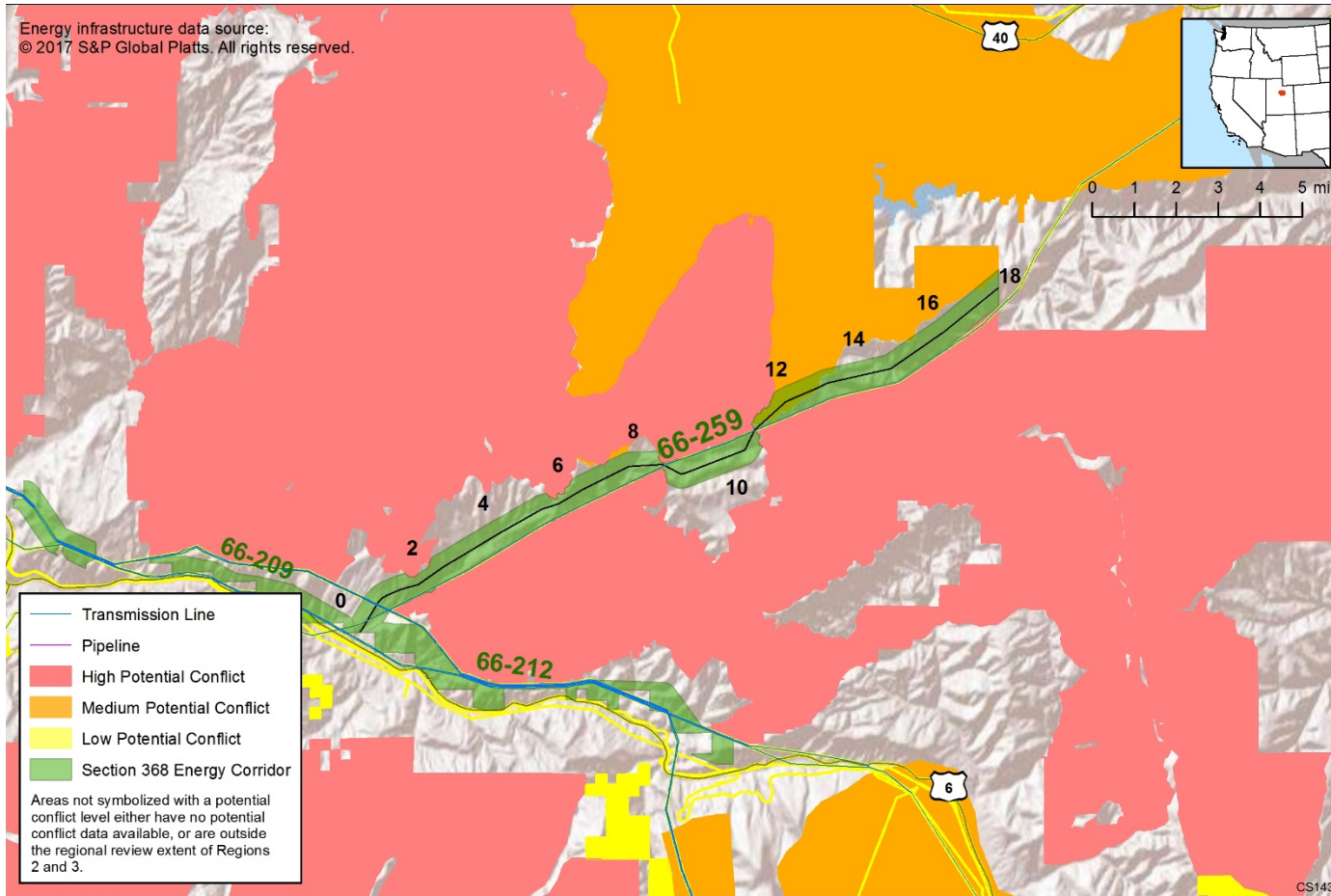


Figure 3. Map of Conflict Areas in Vicinity of Corridor 66-259

Figure 3 reflects a comprehensive resource conflict assessment developed to enable the Agencies and stakeholders to visualize a corridor’s proximity to environmentally sensitive areas and to evaluate options for routes with lower potential conflict. The potential conflict assessment (low, medium, high) shown in the figure is based on [criteria](#) found on the WWEC Information Center at www.corridoreis.anl.gov. To meet the intent of the Energy Policy Act and the Settlement Agreement siting principles, corridors may be located in areas where there is potentially high resource conflict; however, where feasible, opportunity for corridor revisions should be identified in areas with potentially lower conflict.

Visit the 368 Mapper for a full view of the Potential conflict map (<https://bogi.evs.anl.gov/section368/portal/>)

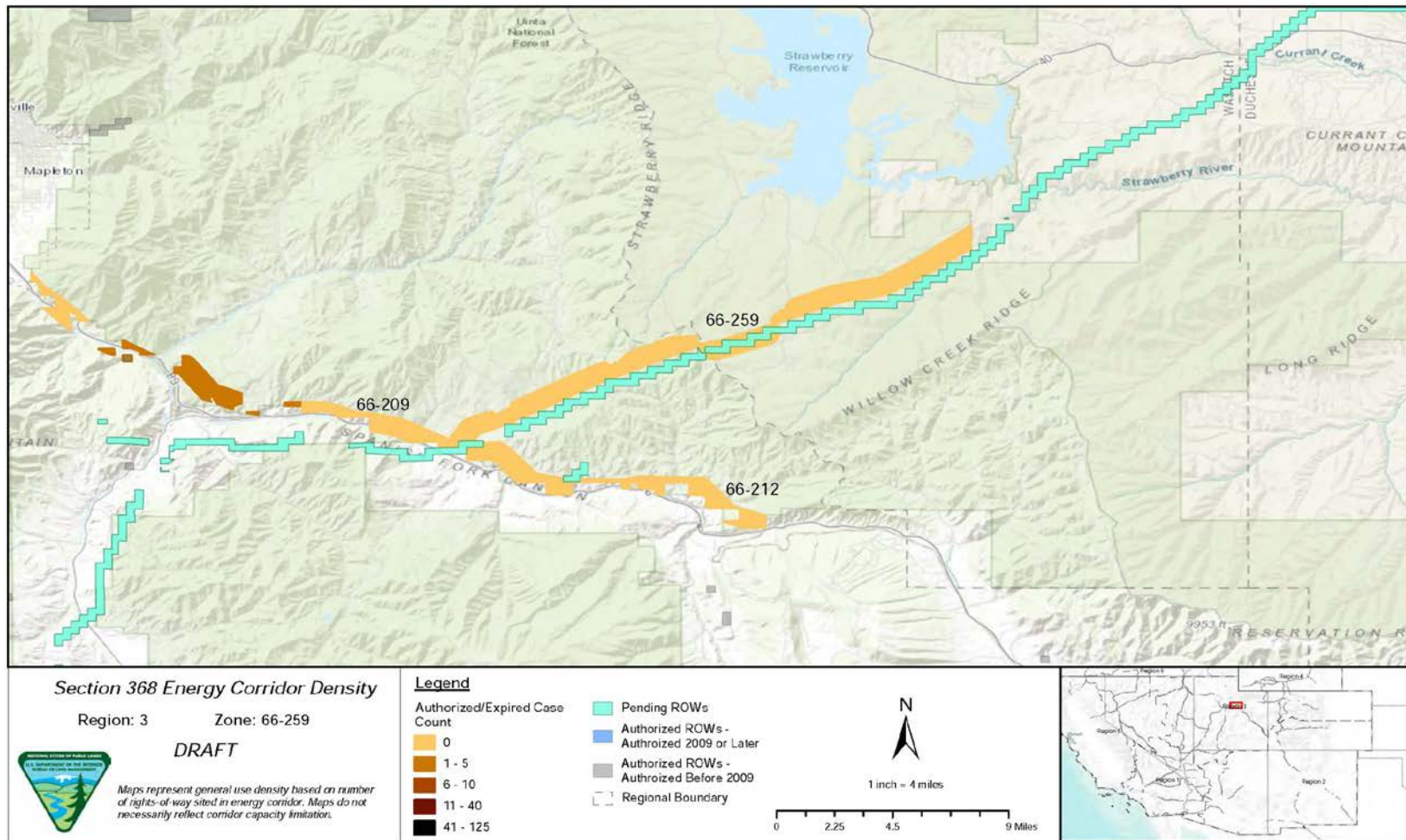


Figure 4. Corridor 66-259, Corridor Density Map

Figure 4 shows the density of energy use to assist in evaluating corridor utility. ROWs granted prior to the corridor designation (2009) are shown in grey; ROWs granted after corridor designation are shown in blue; and pending ROWs under current review for approval are shown in turquoise. Note the ROW density shown for the corridor is only a snapshot that does not fully illustrate remaining corridor capacity. Not all ROWs have GIS data at the time this abstract was developed. BLM and USFS are currently improving their ROW GIS databases and anticipate more complete data in the near future.

General Stakeholder Feedback on Corridor Utility

The State of Utah believes that the corridor plays an important role for existing energy infrastructure in central Utah, and requests that no changes are made to the existing alignment of the corridor.

Corridor Review Table

The table below captures details of the Agencies’ review of the energy corridor. Consideration of the general corridor siting principles of the 2012 Settlement Agreement framed each corridor review, to identify potential improvements to maximize corridor utility and minimize impacts on the environment. Initial Agency analysis is provided to facilitate further discussion during stakeholder workshops.

CORRIDOR 66-259 REVIEW TABLE							
ID	Agency	Agency Jurisdiction	County	Primary Issue	Corridor Location (by Milepost [MP])	Source	Agency Review and Analysis ^{1,2}
ENVIRONMENTAL RESOURCE ISSUES							
<i>Specially Designated Areas</i>							
66-259 .001	USFS	Uinta-Wasatch-Cache National Forest	Utah and Wasatch, UT	418008 IRA/Chipman Creek	MP 8 to MP 12	<p>Settlement Agreement; RFI: re-route to avoid impacts to IRA.</p> <p>GIS Analysis: IRA adjacent to corridor.</p> <p>Comment on abstract: the corridor is adjacent to, but does not intersect, the IRA, and as such the IRA would not affect development inside of the corridor. The close proximity of energy infrastructure and pristine forest areas is a simple reality on USFS land dedicated to multiple use and does not constitute a conflict where certain kinds of forest uses preclude other forest uses nearby. TransWest Express will use tools and methods that are in full compliance with the Roadless Rule and should</p>	<p>The IRA is adjacent to the corridor, which would limit the opportunity to expand or shift the corridor. Because the IRA is adjacent to the corridor, the IRA would not affect development and management inside of the corridor. (1)</p> <p>The TransWest Express project will intersect the Chipman Creek IRA for approximately 2 mi when it is constructed. Construction will use tools and methods that are in compliance with the direction in the Roadless Rule. Experience with this line suggests that it is not likely practical to construct long sections of utility in roadless areas. Further expansion into the IRA is likely limited.</p> <p>There is an opportunity to consider the addition of an Agency Coordination IOP related to IRAs. (2)</p>

CORRIDOR 66-259 REVIEW TABLE							
ID	Agency	Agency Jurisdiction	County	Primary Issue	Corridor Location (by Milepost [MP])	Source	Agency Review and Analysis ^{1,2}
						proceed as currently planned. Some energy infrastructure through or nearby IRAs is necessary for Utah’s continued economic growth and quality of life.	
66-259 .002	USFS	Uinta-Wasatch-Cache National Forest	Wasatch, UT	418009 IRA/Willow Creek	MP 11 to MP 18	<p>Settlement Agreement. RFI: re-route to avoid impacts on IRA.</p> <p>GIS Analysis: IRA adjacent to corridor.</p>	The corridor is not designated within these IRAs. The IRAs would not affect development and management inside of the corridor, but they would limit the ability to shift or expand the corridor, especially between MP 2 and MP 12, where the corridor is near or adjacent to IRAs on both sides. (1)
66-259 .003	USFS	Uinta-Wasatch-Cache National Forest	Utah and Wasatch, UT	418015 IRA/Strawberry Ridge	<p>MP 6 and MP 7</p> <p>MP 4 to MP 8</p>	<p>Settlement Agreement. RFI: re-route to avoid impacts on IRA.</p> <p>GIS Analysis: IRA adjacent to corridor.</p> <p>GIS Analysis: IRA as close as 1,100 ft north of corridor.</p>	
66-259 .004	USFS	Uinta-Wasatch-Cache National Forest	Utah, UT	418016 IRA/Diamond Fork	<p>MP 2 to MP 3</p> <p>MP 1 to MP 2 and MP 3 to MP 5</p>	<p>Settlement Agreement. RFI: re-route to avoid impacts on IRA.</p> <p>GIS Analysis: IRA adjacent to corridor.</p> <p>GIS Analysis: IRA as close as 530 ft north of corridor.</p> <p>Comment on abstract: USFS IRAs and potential wilderness areas are inappropriate for transmission and other energy infrastructure. Corridor intersects with IRAs and potential wilderness areas (1 acre overlap).</p>	

CORRIDOR 66-259 REVIEW TABLE							
ID	Agency	Agency Jurisdiction	County	Primary Issue	Corridor Location (by Milepost [MP])	Source	Agency Review and Analysis ^{1,2}
66-259 .005	USFS	Uinta-Wasatch-Cache National Forest	Utah and Wasatch, UT	418017 IRA/Tie Fork	MP 1 to MP 9	Settlement Agreement. RFI: re-route to avoid impacts to IRA. GIS Analysis: IRA adjacent to corridor.	
66-259 .006	USFS	Uinta-Wasatch-Cache National Forest	Utah and Wasatch, UT	IRAs	MP 1, MP 18	Comment on abstract: the analysis shows that this corridor goes through IRAs and as a result, the corridor is only 100-ft wide at certain pinch points. There is already one transmission line in this corridor and the 100-ft wide area does not allow enough room for additional lines to be placed there unless underground. TransWest Express should not be allowed to be installed in this corridor because of this.	
Ecology							
66-259 .007	USFS	Uinta-Wasatch-Cache National Forest	Wasatch, UT	GRSG Priority Habitat (BLM and USFS sensitive species)	MP 12 to MP 13	Settlement Agreement. RFI: re-route or exclude new infrastructure ROWs and avoid all new energy infrastructure development within GRSG PACs (53% overlap). Use full mitigation hierarchy to avoid, minimize, and compensate for impacts within 4 mi of important GRSG breeding areas. Consult closely with state fish and game Agencies and WGA to implement the full mitigation hierarchy of avoidance, minimization, and compensation for CHAT resources at "Very High" risk.	USFWS PAC is equivalent to the State of Utah SGMA. The corridor runs through a mapped non-habitat portion of the Utah SGMA. The corridor best meets siting principles. (1)

CORRIDOR 66-259 REVIEW TABLE							
ID	Agency	Agency Jurisdiction	County	Primary Issue	Corridor Location (by Milepost [MP])	Source	Agency Review and Analysis ^{1,2}
						<p>GIS Analysis: GRSG Proposed Priority Habitat is 1 mi from corridor.</p> <p>Comment on abstract: the corridor runs through a mapped non-habitat portion of a SGMA. Due to the area being non-habitat, a re-route or ROW exclusion is not warranted. Recommend that the BLM and USFS coordinate with the Utah Division of Wildlife Resources during the ROW application process for new infrastructure in the corridor to ensure mitigation of negative impacts to GRSG habitat.</p>	
66-259 .008				Special status species	Not specified.	<p>Comment on abstract: threatened and endangered species that may occur along this corridor include Western Yellow-billed Cuckoo, Clay Phacelia, and Ute Ladies'-tresses. Colorado River fishes may also be impacted by direct impacts from stream crossings and water depletions. Projects taking place in this corridor may require ESA Section 7 consultation with the USFWS. We recommend that projects within this corridor are evaluated for impacts to listed species and their habitats, and measures are included to avoid, minimize, and mitigate impacts. We recommend that the corridor be relocated at least</p>	<p>This corridor location within the current range where these species may occur is not easily resolved or avoided by corridor-level planning. Further analysis to determine the presence of all species occurring within the area will be considered outside of corridor-level planning. (3)</p>

CORRIDOR 66-259 REVIEW TABLE							
ID	Agency	Agency Jurisdiction	County	Primary Issue	Corridor Location (by Milepost [MP])	Source	Agency Review and Analysis ^{1,2}
						650 ft from occupied and suitable habitat for Clay Phacelia. Occupied and suitable habitat for Clay Phacelia occurs between MP 0 and MP 4. Contact our office at (801) 975-3330 for a polygon of Clay Phacelia occupied and suitable habitat.	
Paleontological Resources							
66-259 .009	USFS	Uinta-Wasatch-Cache National Forest	Utah and Wasatch, UT	PFYC Class 4 PFYC Class 5	MP 0 to MP 8 and MP 11 to MP 14 MP 6 to MP 11 and MP 13 to MP 18	GIS Analysis: PFYC Class 4 and 5 areas intersect corridor. Agency Input: PFYC Class 4 and 5 will require surveys. Proposed ground disturbing activities will require assessments, possible mitigation and or monitoring depending on findings.	The identified potential of paleontological resources is a concern for the Agencies that cannot be resolved during corridor-level planning. Assessments will occur as part of the ROW application process. (3)
Visual Resources							
66-259 .010	USFS	Uinta-Wasatch-Cache National Forest	Utah and Wasatch, UT	VQO and ROS	Not specified.	Agency Input: VQO and ROS ratings. The VQO for the majority of the area traversed by this corridor is identified as "Retention," but there are pockets of "Modification." Under Retention, activities may only repeat form, line, color, and texture, which are frequently in the characteristic landscape. Changes in their qualities of size, amount, intensity, direction,	For areas where only retention is allowed, future development within the corridor would likely be limited; it is unlikely that a project would be permitted in a semi-primitive non-motorized area. (3)

CORRIDOR 66-259 REVIEW TABLE							
ID	Agency	Agency Jurisdiction	County	Primary Issue	Corridor Location (by Milepost [MP])	Source	Agency Review and Analysis ^{1,2}
						<p>pattern, etc., should not be evident.</p> <p>The ROS is Roded Natural, but crosses areas identified as Semi Primitive Non-Motorized.</p>	
Land Use Concerns							
Public Access and Recreation							
66-259 .011				Recreational development	Not specified.	Comment on abstract: a large recreational development is being planned in the area that would be adversely impacted by additional transmission line development in this corridor.	BLM can only authorize projects on BLM-administered lands. Development in corridor gaps would require coordination outside of the Agencies. (3)
66-259 .012				Recreational area	Not specified.	Comment on abstract: this corridor runs through an area that is highly prized for recreation and is visited by many people throughout the state and beyond for its angling, camping and off road opportunities. The County feels that there are less obtrusive routes for this corridor outside of such a highly prized recreational area and have stated this as a stakeholder and participating Agency in the previous reviews.	The recently authorized TransWest Express transmission project was approved in this corridor and co-location with future projects in this corridor would best meet siting principles. (1)
Other noted land use concerns (where applicable)							
66-259 .013	USFS	Uinta-Wasatch-Cache National Forest	Wasatch, UT	Spacing requirements	MP 11	Agency Input: the corridor is full in the narrowed segment.	The corridor is restricted to 100 ft in width by adjacent roadless areas. The corridor cannot accommodate additional infrastructure at this location. (3)
66-259 .014				Wildfires	Not specified.	Comment on abstract: this corridor would place existing and future transmission lines in a very vulnerable area for	The recently authorized TransWest Express transmission project was approved in this corridor. Vegetation management would be required at the

CORRIDOR 66-259 REVIEW TABLE							
ID	Agency	Agency Jurisdiction	County	Primary Issue	Corridor Location (by Milepost [MP])	Source	Agency Review and Analysis ^{1,2}
						damage in a wildfire. Corridors in more open areas on lands to the south should be utilized. The area is prime for wildfire due to years of inactive forest management.	project level and co-location with future projects in this corridor would best meet siting principles. (1)
66-259 .015				Socioeconomic/tourism impacts	Not specified.	Comment on abstract: along with the concerns of the impacts to tourism, there is an approved development on approximately 7,000 acres along this alignment. This development may have up to 1,234 units. The County is concerned with property value impacts as well as visual impacts to future residents and visitors to the County.	Impacts to tourism and socioeconomics is a potential impact that cannot be resolved at corridor level planning. (3)
66-259 .016	NA	Private lands	UT	Agricultural lands	Not specified.	Comment on abstract: energy development may have impact on agriculture in adjacent areas if not developed and maintained properly (e.g., invasive and noxious weed species). Ensure that all developments, changes, or alterations to energy corridors do not adversely affect agriculture and domestic livestock grazing in affected areas.	Corridor-level planning does not entail the detail necessary to prescribe operation and maintenance procedures on hypothetical projects or corridor revisions. The concern will be addressed with specific, current information at the time of energy development proposal(s). (3)

¹ Projects proposed in the corridor would be reviewed during their ROW application review process and would adhere to Federal laws, regulations, and policy.

² (1) = confirm existing corridor best meets siting principles; (2) = identify opportunities to improve corridor placement or IOPs; (3) = acknowledge concern not easily resolved or avoided by corridor-level planning.

Abstract Acronyms and Abbreviations

BLM = Bureau of Land Management; CHAT = Crucial Habitat Assessment Tool; ESA = Endangered Species Act; GIS = geographic information system; GRSG = Greater Sage-grouse; IOP = interagency operating procedure; IRA = Inventoried Roadless Area; MP = milepost; PAC = Priority Area for Conservation; PEIS = Programmatic Environmental Impact Statement; PFYC = Potential Fossil Yield Classification; RFI = request for information; ROS = Recreation Opportunity Spectrum; ROW = right-of-way; SGMA = Sage-

grouse Management Area; USFS = U.S. Forest Service; USFWS = U.S. Fish and Wildlife Service; VQO = Visual Quality Objective; WGA = Western Governors' Association; WWEC = West-wide Energy Corridor.