

# Corridor 134-136

Roubideau Corridor

## Corridor Rationale

This energy corridor provides north-south connectivity for pipeline as well as electric transmission line infrastructure. Input regarding alignment from National Grid during the WWEC PEIS suggested following this route. There are no planned transmission or pipeline projects within the corridor and no pending or recently authorized major ROWs for transmission line or pipeline projects within the corridor at this time. A recently authorized transmission line intersects the corridor.

### Corridor location:

Colorado (Montrose Co.)  
 BLM: Uncompahgre Field Office  
 USFS: Uncompahgre National Forest  
 Regional Review Region(s): Region 2

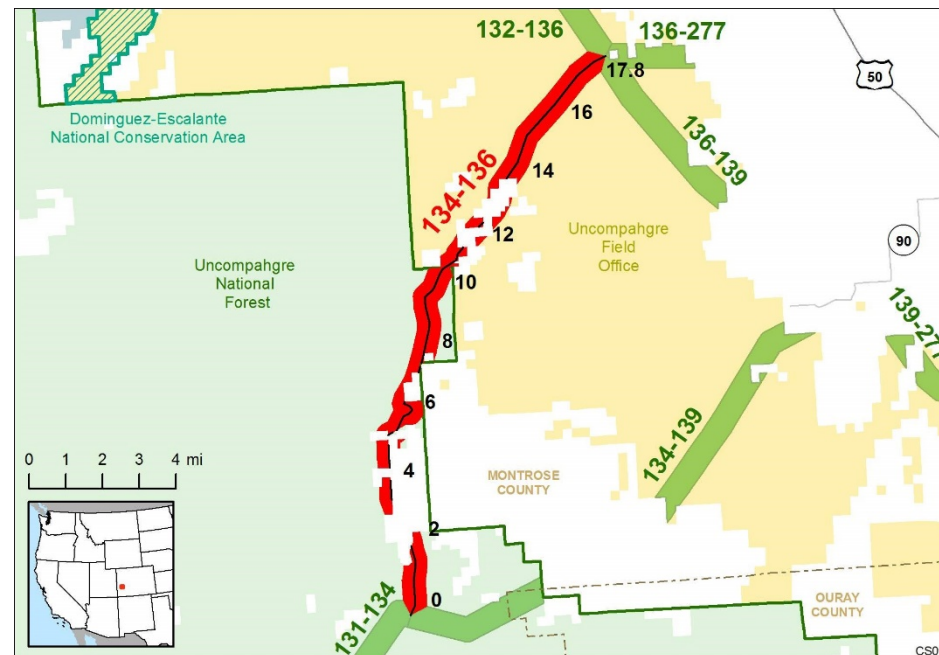
### Corridor width, length:

Width 3,500 ft  
 12.6 miles of designated corridor  
 17.8 mile-posted route, including gaps

### Sec 368 energy corridor restrictions: (N)

- corridor is multi-modal

### Corridor of concern (N)



### Corridor history:

- Locally designated corridor prior to 2009 (Y)
- Locally designated in Uncompahgre National Forest
- Existing infrastructure prior to 2009 (Y)
- Pipelines:
  - 2 natural gas (MP 0 to MP 18)
- Energy potential near the corridor (N)
- Corridor changes since 2009 (N)

Figure 1. Corridor 134-136

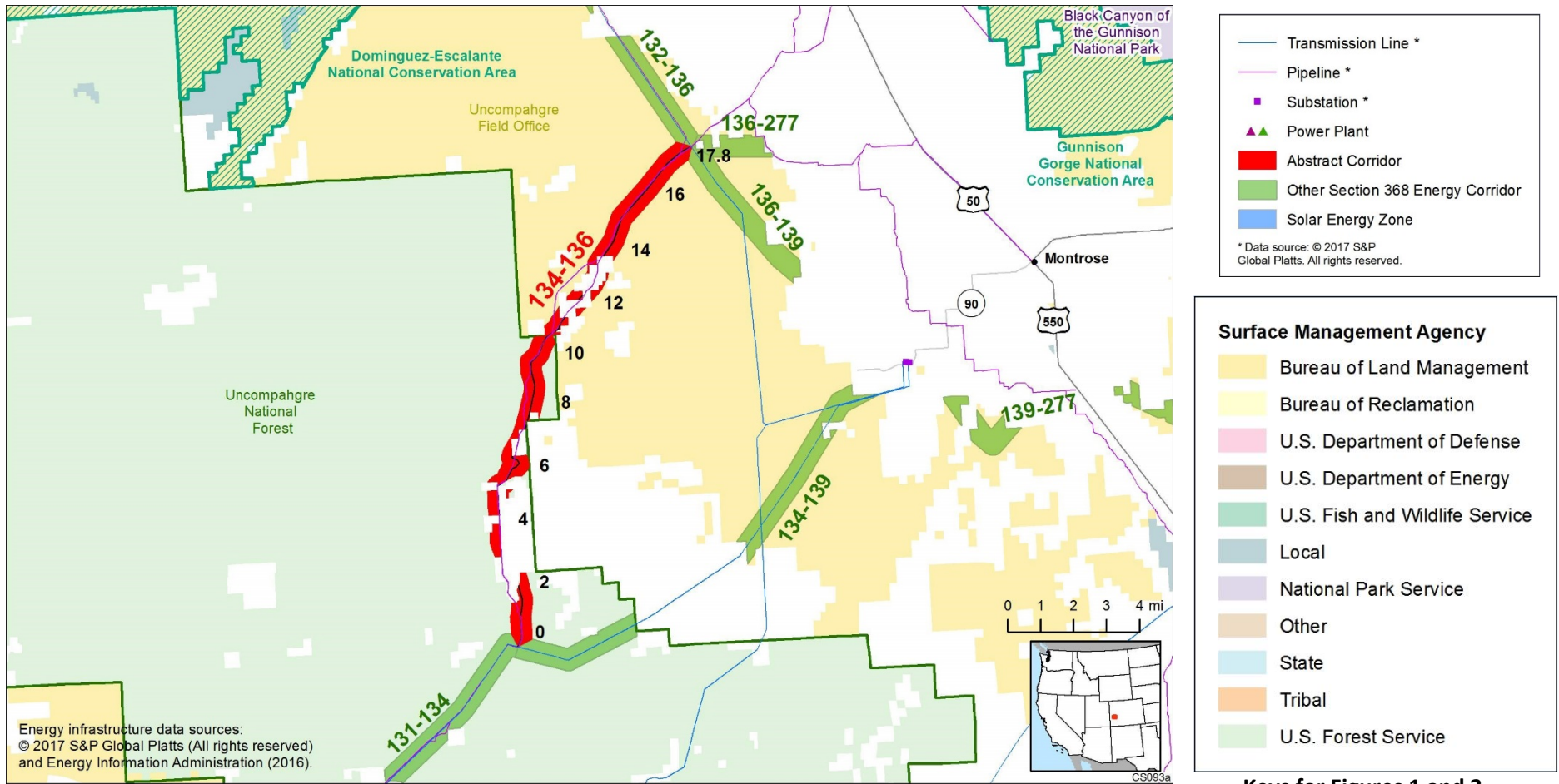


Figure 2. Corridor 134-136 and nearby electric transmission lines and pipelines

## Conflict Map Analysis

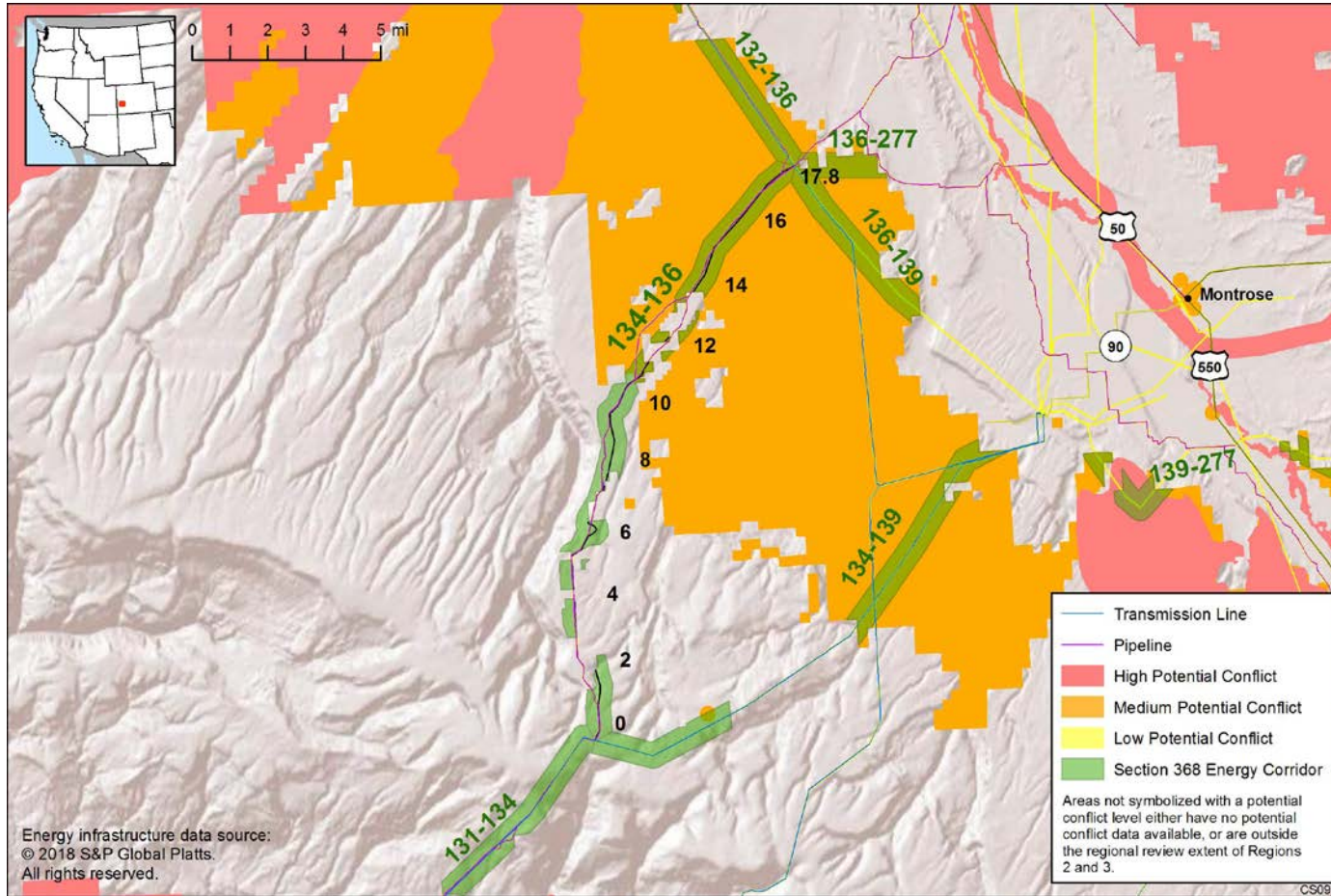
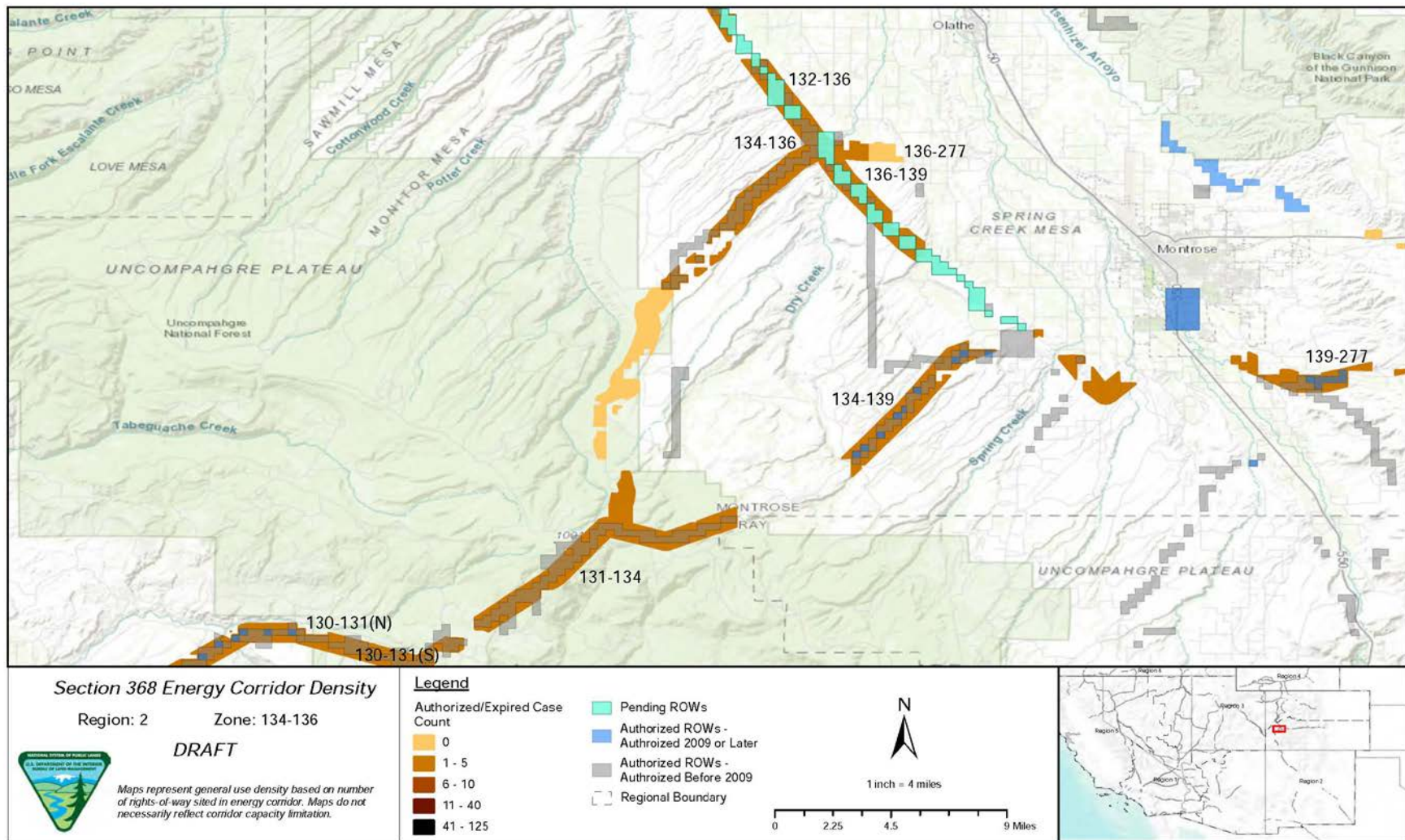


Figure 3. Map of Conflict Areas in Vicinity of Corridor 134-136

Figure 3 reflects a comprehensive resource conflict assessment developed to enable the Agencies and stakeholders to visualize a corridor’s proximity to environmentally sensitive areas and to evaluate options for routes with lower potential conflict. The potential conflict assessment (low, medium, high) shown in the figure is based on [criteria](#) found on the WWEC Information Center at [www.corridoreis.anl.gov](http://www.corridoreis.anl.gov). To meet the intent of the Energy Policy Act and the Settlement Agreement siting principles, corridors may be located in areas where there is potentially high resource conflict; however, where feasible, opportunity for corridor revisions should be identified in areas with potentially lower conflict.

Visit the 368 Mapper for a full view of the Potential conflict map (<https://bogi.evs.anl.gov/section368/portal/>)



**Figure 4. Corridor 134-136, Corridor Density Map**

Figure 4 shows the density of energy use to assist in evaluating corridor utility. ROWs granted prior to the corridor designation (2009) are shown in grey; ROWs granted after corridor designation are shown in blue; and pending ROWs under current review for approval are shown in turquoise. Note the ROW density shown for the corridor is only a snapshot that does not fully illustrate remaining corridor capacity. Not all ROWs have GIS data at the time this abstract was developed. BLM and USFS are currently improving their ROW GIS databases and anticipate more complete data in the near future.

## General Stakeholder Feedback on Corridor Utility

Stakeholders did not provide specific input on corridor utility.

## Corridor Review Table

The table below captures details of the Agencies’ review of the energy corridor. Consideration of the general corridor siting principles of the 2012 Settlement Agreement framed each corridor review, to identify potential improvements to maximize corridor utility and minimize impacts on the environment. Initial Agency analysis is provided to facilitate further discussion during stakeholder workshops.

CORRIDOR 134-136 REVIEW TABLE							
ID	Agency	Agency Jurisdiction	County	Primary Issue	Corridor Location (by Milepost [MP])	Source	Agency Review and Analysis <sup>1, 2</sup>
<b>ENVIRONMENTAL RESOURCE ISSUES</b>							
<i>Specially Designated Areas</i>							
134-136 .001	USFS	GMUG National Forests	Montrose, CO	Roubideau SMA	MP 1 to MP 2, MP 3 to MP 9	<p>GIS Analysis: Roubideau SMA and corridor are less than 1 mi apart and intersect near MP 9.</p> <p>Agency Input: The Roubideau SMA was designated in 1993 to be managed to protect its wilderness character. This area is a canyon below the elevation of the corridor. The corridor parallels much of the eastern edge of the Roubideau SMA. The area was designated after the 1D utility corridor management prescription was established and after the TransColorado pipeline was constructed.</p>	A very small portion of the SMA extends into the corridor. There is an opportunity to consider revision of the corridor, perhaps designating the corridor as underground-only, since an above-ground transmission line in close proximity to the Roubideau SMA has the potential to conflict with its wilderness character and visual resources. The only existing infrastructure in the corridor are pipelines, and there is another nearby corridor designated for above-ground electrical transmission. (2)
<i>Ecology</i>							
134-136 .002				Special Status Species	Not specified.	<p>Comment on abstract: Additional species not identified in the corridor abstract may be present: Canada Lynx, North American Wolverine, Gunnison Sage-grouse, Mexican Spotted Owl, Western Yellow-billed</p>	This corridor location within the current range where these species may occur is not easily resolved or avoided by corridor-level planning because alternate routes would still require siting through the current range of these species. Further analysis to

CORRIDOR 134-136 REVIEW TABLE							
ID	Agency	Agency Jurisdiction	County	Primary Issue	Corridor Location (by Milepost [MP])	Source	Agency Review and Analysis <sup>1, 2</sup>
						Cuckoo, Bonytail Chub, Colorado Pikeminnow, Greenback Cutthroat Trout, Humpback Chub, Razorback Sucker, Clay-loving Wild Buckwheat, and Colorado Hookless Cactus.  Conduct further analysis to determine the presence of abovementioned species.	determine the presence of all species occurring within the area will be considered outside of corridor-level planning. (3)
134-136 .003	USFS	GMUG National Forests	Montrose, CO	Big-game winter range	MP 8 to MP 10	Agency Input: there is mapped seasonally restricted big-game winter range per the GMUG Forest Plan.	Big-game winter range habitat is an important consideration but further analysis of this species is not a consideration for corridor-level planning. (3)
<b>Cultural Resources</b>							
134-136 .004	USFS	GMUG National Forests	Montrose, CO	Prehistoric and historic sites	Not specified.	Agency Input: the upper rim of Roubideau Canyon contains a high concentration of prehistoric and historic sites, including a listed Ranger Cabin.	Cultural sites are a concern for the Agencies that cannot be easily resolved during corridor-level planning. Existing IOPs specific to cultural resources and tribal consultation would be followed in connection with any proposed energy project in the corridor. (3)
<b>Visual Resources</b>							
134-136 .005	BLM	Uncompahgre FO	Montrose, CO	VRM Class III	MP 11 to MP 18	GIS Analysis: VRM Class III areas and corridor intersect.	VRM Class III allows for moderate change to the characteristic landscape, although minimizing visual contrast remains a requirement. Management activities may attract the attention of the casual observer, but shall not dominate the view. (1)

<sup>1</sup> Projects proposed in the corridor would be reviewed during their ROW application review process and would adhere to Federal laws, regulations, and policy.

<sup>2</sup> (1) = confirm existing corridor best meets siting principles; (2) = identify opportunities to improve corridor placement or IOPs; (3) = acknowledge concern not easily resolved or avoided by corridor-level planning.

## Abstract Acronyms and Abbreviations

BLM = Bureau of Land Management; ESA = Endangered Species Act; FO = Field Office; GIS = geographic information system; GMUG = Grand Mesa, Gunnison, and Uncompahgre; IOP = Interagency Operating Procedures; MP = milepost; PEIS = Programmatic Environmental Impact Statement; ROW = right-of-way; SMA = Special Management Area; USFS = U.S. Forest Service; USFWS = U.S. Fish and Wildlife Service; VRM = Visual Resource Management; WWEC = West-wide Energy Corridor.